



DREAMING TREE

3DSVG.COM

PRODUCT DESIGNER/ ART DIRECTOR: RON GUTMAN
ARTIST: DIANA TAM

NATIVITY LANTERN



PRODUCT SIZE: 6" H X 3.875" W X 3.875" D

SUPPLIES NEEDED:

- 3 SHEETS OF 8.5X11 GRAPE CARDSTOCK
- 1 SHEET OF 12X12 WHITE GLITTER PAPER
- 2 SHEETS OF 8.5X11 TEAL VELLUM PAPER
- 1 SHEET OF 8.5X11 YELLOW VELLUM PAPER
- RHINESTONES "OPTIONAL"
- SILVER BRAID (1/4" IN THICKNESS)
- BATTERY LED LIGHT
- HOT GLUE
- GLUE

7.6" WIDE
MAIN_1_GRAPE.SVG

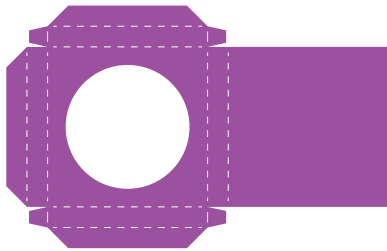


7.3" WIDE
MAIN_2_GRAPE.SVG



COPYRIGHT 2022 DREAMING TREE. VISIT WWW.3DSVG.COM/HELP FOR ASSISTANCE USING OUR FILES WITH YOUR MACHINE. VISIT THIS PRODUCT'S PAGE AT 3DSVG.COM TO VIEW THE ASSEMBLY TUTORIAL.

9.3" WIDE
MAIN_3_GRAPE.SVG



9.7" WIDE
PANELS_1_TEAL_VELLUM.SVG



3.1" WIDE
PANELS_2_TEAL_VELLUM.SVG



6.8" WIDE
PANELS_WHITE_GLITTER.SVG



2" WIDE
PANELS_YELLOW_VELLUM.SVG

